

# SHIRE OF MERREDIN COMMUNITY NEWS & INFORMATION



## How you can help prevent mosquito breeding

With the weather warming up and the summer storms starting, you might have noticed the mosquitoes starting to come out. Proactive private residences and businesses can make the most significant difference to mosquito numbers each and every year. Please be mindful that your property could be providing the perfect location and conditions for mosquitoes to breed. YOU can make the most significant impact on mosquito numbers this year.

Mosquitoes only need a teaspoon of warm, stagnant water in which to breed, so you can make the biggest difference by being mindful of keeping an eye on possible breeding sites around your home, business or workshop:

- Dispose of all containers which hold water;
- Tyres hold water and are the perfect breeding ground for mosquitoes...please ensure that they are checked regularly and emptied as required
- Keep ornamental ponds stocked with mosquito-eating fish, eg goldfish;
- Keep margins of ponds and small dams free of vegetation;
- Keep swimming pools well chlorinated and filtered and free of dead leaves.
- Fill or drain depressions in the ground that hold water;
- Vent pipes on septic tank systems must be fitted with mosquito proof cowls;
- Seal all gaps in lid and ensure leach drains are completely covered;
- Screen rainwater tanks with insect proof mesh, including inlet, overflow and inspection ports. Ensure guttering does not hold water;
- Empty pot plant drip trays once a week or fill with sand. Empty and clean animal and pet drinking water once a week;
- Some pot plants (such as bromeliads) hold water in their leaf axils. These should be emptied of water once a week.

## In This Issue

- How you can help prevent mosquito breeding
- Theatre closed in January
- Reporting faulty streetlights
- Stream videos with Library membership
- Modified Library hours in January
- Gallery: Gala Night
- Woodcrafts wanted
- Q & A: Harvest and Vehicle Movement Bans

## January Council Meeting

The next Ordinary Council Meeting will be held at the Shire Administration Building, in Council Chambers, on Tuesday 16 January 2018 and will commence at 3:00pm. Members of the public are welcome to attend. The Agenda will be available to view on Council's website on Monday 15 January 2018.

## Theatre closed in January

The Cummins Theatre will be closed during January while we have a new stage floor and audio cabling installed. In addition the bathrooms will be getting a bit of a make-over with new soap dispensers and baby change tables being installed.

These improvements have been made possible thanks to funding from the State Government of WA through the Regional Venues Improvement Fund.

We apologise for any inconvenience this closure may cause - but we're looking forward to seeing the new upgrades!

## Reporting faulty streetlights

We've received several enquiries lately regarding the number of faulty streetlights around Merredin.

The quickest and easiest way to report these to Western Power for their attention is via their easy self-reporting tool online.

Go to <http://www.westernpower.com.au>, then click or hover over "Power outages" > "Report a faulty streetlight". You will be shown an interactive map like that pictured below. You simply search for the street, click the faulty streetlights (indicated by an orange dot) and fill in a few details about the fault.

Western Power then receive it and log it for repairs.

## Stream videos with Library membership

With the arrival of Kanopy to the Merredin Library, you can now stream documentaries, Classic and Indie films for free with your Library membership.

Kanopy enables public library and State Library members to browse and view over 30,000 films and documentaries from top suppliers including the BBC, Criterion Collection, Ronin Films and Madman Entertainment. All you need is your library barcode and an internet connection and you can stream up to 4 movies per month at no charge.

Library membership is free for all residents of the Shire of Merredin. It takes minutes to join — just come into the library with proof of your current address and fill out a form.

Additionally, with your membership you can access eBooks, eAudiobooks and eMagazines from home. Ask library staff about our other electronic resources such as OverDrive, Borrowbox, RBDigital, The Computer School and Ziptales. All of these and more can be accessed from <http://www.merredin.wa.gov.au/library-services.aspx>

## Modified Library hours in January

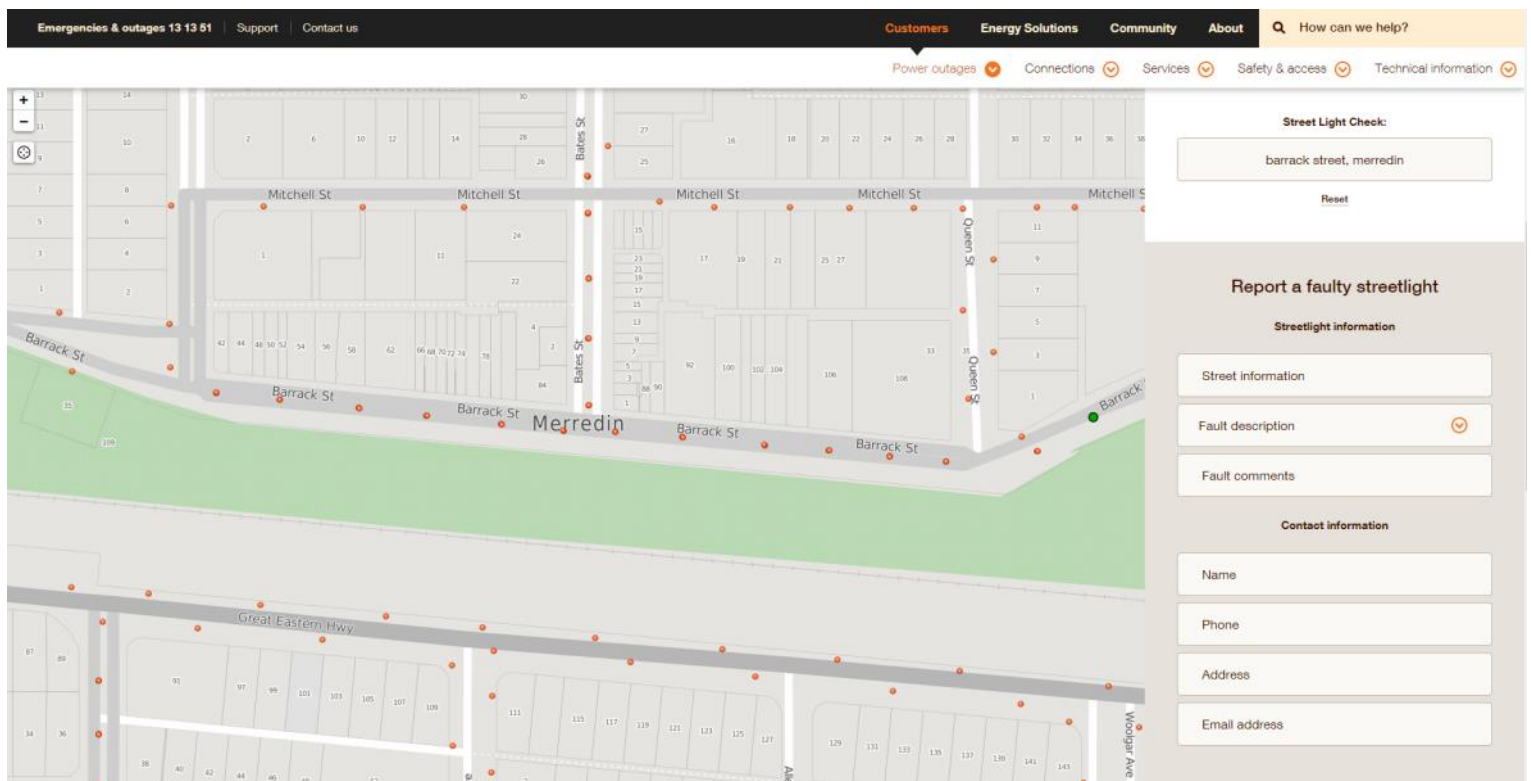
As in previous years, the Library will be operating reduced hours in January as follows:

**Mon, Tue, Thu, Fri: 10am-2pm**

**Wed: 1pm-5pm**

**Sat: 10am-12pm**

Normal hours will resume Monday 29th January.





**Gala Night**  
 Christmas Shopping \* Entertainment \* Market Stalls  
 Christmas Carols \* Meet Santa

**14 December**  
 Barrack Street 5:00pm - 9:00pm





## Woodcrafts wanted

Do you enjoy a bit of woodwork? Are your friends and family always telling you that you should try selling your work?

Our current local Wheatbelt crafter who supplies the Central Wheatbelt Visitor Centre with beautiful handcrafted timber products has unfortunately had to stop due to health reasons.

His woodturned creations were very popular and we'd love to be able to continue selling locally made woodwork products. We are looking for another talented woodworker to display and sell their timber products through the Visitor Centre.

If you're interested or know someone who is, pop in and see Robyn or Carina at the Visitor Centre, phone 9041 1666 or email [visitor@merredin.wa.gov.au](mailto:visitor@merredin.wa.gov.au)



## Q&A - Harvest and Vehicle Movement Bans and Total Fire Bans

### Q. How can I find out about Harvest and Vehicle Movement Bans and Total Fire Bans?

**A:** "Harvest and Vehicle Movement Bans" are set by the local government for a given area. "Total Fire Bans" are set by the Department of Fire & Emergency Services and prohibit any activity that may start a fire.

The Shire of Merredin maintains a Harvest Ban SMS notification list. You can contact the Shire on 9041 1611 to get your number added to the list to receive an SMS alert whenever a Harvest Ban or Total Fire Ban is put in place.

Alternatively, you can phone our Harvest Ban hotline on 9041 2999 at any time to find out if there is a ban currently in effect. To find out if DFES have declared a Total Fire Ban, as well as to learn what you specifically can and can't do during a Total Fire Ban, visit the DFES website at [www.dfes.wa.gov.au](http://www.dfes.wa.gov.au).

#### **Restricted Burning Period:**

18 September 2017 - 31 October 2017

17 February 2018 - 16 March 2018

#### **Prohibited Burning Period:**

1 November 2017 - 16 February 2018

"Restricted burning" means that burning may only be conducted with a permit issued by the Shire Ranger or a Fire Control Officer. "Prohibited burning" means absolutely no burning off whatsoever. Anyone burning an open fire in the front or back yard - including residential properties in town, and irrespective of whether it has rained recently - risks a \$250 fine.