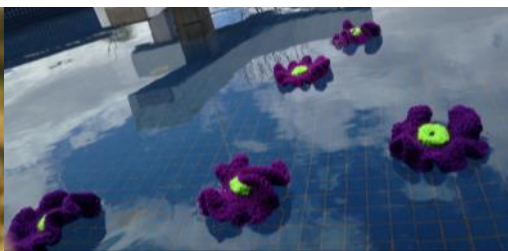


SHIRE OF MERREDIN COMMUNITY NEWS & INFORMATION



Poppy planting for Remembrance Day

We will once again be bringing out the thousands of poppies that the residents of the Shire of Merredin have handcrafted over the past several years.

This year, we hope to add a small field of purple poppies to the display, to honour the animal contribution and sacrifice during times of war.

The 510 Merredin Army Cadet unit will be leading the poppy planting and plucking this year, and as always, every member of the local community is invited and encouraged to join in - plant one poppy or plant a box, it's entirely up to you!

The Army Cadets will be gathering at the Barrack Street entrance off the Great Eastern Highway at the western end of town from 10am on Sunday 5th November to plant the poppies.

Handmade poppies will continue to be accepted up to the day - just bring yours along and plant them!

The Cadets will then begin removing the poppies from 10am on Sunday 19th November.

In This Issue

Poppy planting for Remembrance Day

New Councillors inducted

Christmas closures

Christmas gift range

Community events calendar

Managing alpaca welfare

Cat and dog registrations due

Q&A: Restricted and prohibited

burning & harvest bans



November Council Meeting

The next Ordinary Council Meeting will be held at the Shire Administration Building, in Council Chambers, on Tuesday 21 November 2017 and will commence at 3:00pm. Members of the public are welcome to attend. The Agenda will be available to view on Council's website on Monday 20 November 2017.



L-R: President Ken Hooper, Councillor Julie Flockart, JP Gloria Banks, Councillor Roy Butler, Deputy President Mal Willis and Councillor Romolo Patroni

New Councillors inducted

Following the Local Government elections at the end of October, the Shire of Merredin welcomed three new members to the Council at the October Council Meeting.

Julie Flockart, Roy Butler and Romolo Patroni are the three newly elected Councillors. Mal Willis returns for a second term, and has also accepted the role of Deputy President. Ken Hooper was re-elected to the role of Council President.

Congratulations to the new Councillors - we wish you all the very best!

Christmas closures

A number of Shire venues and facilities will be operating with modified opening hours over the Christmas period.

Keep an eye out in next month's newsletter, the Shire website (www.merredin.wa.gov.au), social media (www.facebook.com/ShireofMerredin) and posters around Shire facilities closer to Christmas for specific facility information.

Christmas gift range at the Visitor Centre

The Central Wheatbelt Visitor Centre stocks a great range of local crafts, giftware and souvenirs all year round - but they've got some great new ranges in just in time for Christmas.


If you're stuck for a beautiful, unique gift for that hard to buy for relative or friend, pop in to the Centre next time you're in town and check out their selection of goodies.




COMMUNITY EVENTS

Every Tuesday	10.30am	Storytime at the Library	Library	Free
30 October	6.00am	Merredin Pool reopens for 2017/18 summer	Pool	From \$3.50
1 November		Prohibited Burning Period	Shire	\$250
5 November	10.00am	Remembrance Day Poppy Planting	Town entrance	Free
9 November	5.30pm	Collgar Grants Information Evening	Rec Centre	Free
19 November	10.00am	Remembrance Day Poppy Picking	Town entrance	Free
21 November	3.00pm	Shire Council meeting	Council chambers	Free

Merredin District Olympic Pool



Reopens
30 October



MAKE A recycled Christmas Tree



PUT YOUR CREATIVE TALENTS TO WORK THIS YEAR TO MAKE A CHRISTMAS TREE TO BE DISPLAYED IN THE WINDOW OF THE CENTRAL WHEATBELT VISITOR CENTRE IN DECEMBER.

use carbs, ties, plastic bottles, tubes, paper, found objects - you're only limited by your imagination!

TREES ARE LIMITED TO 90CM HIGH, MUST BE FREESTANDING AND (IF LIT) BATTERY OPERATED

CREATE A CHRISTMAS TREE FROM RECYCLED MATERIALS

NAME:.....
 PHONE:.....
 EMAIL:.....
 NAME/DESCRIPTION OF TREE:.....
 TREE MADE FROM:.....

TREES TO BE DELIVERED TO CENTRAL WHEATBELT VISITOR CENTRE FRIDAY 1ST DECEMBER BETWEEN 8.30AM AND 4.30PM AND COLLECTED FRIDAY 12 JANUARY 2018 BETWEEN 8.30AM AND 4.30PM
 FOR MORE INFO, PLEASE CONTACT ROBYN OR CARINA AT THE VISITOR CENTRE ON 9041 1666 OR VISITOR2@MERREDIN.WA.GOV.AU

Contact Shire of Merredin
 9041 1611
 media@merredin.wa.gov.au

OPERATION field of poppies

We'll be planting the handmade poppies around the "Merredin" and "Town Centre" walls again this Remembrance Day. This year we want to create a purple field of poppies to remember the animal contribution to war efforts. We're looking for volunteers to help plant the poppies.



Gala Night

14 December 2017

Book your stall now!

Stallholder registrations due before 7 December 2017
 Stallholder fee of \$20 applies

For stallholder bookings and enquiries please contact Central Wheatbelt Visitor Centre on 9041 1666

Managing alpaca welfare

The Ranger has been made aware of a number of alpacas living in the shire that are owned by residents as pets and may not have the necessary knowledge and experience of alpacas to care for them appropriately - that is, under Australian conditions and as per the Animal Welfare Act 2002.

A brief summary of the basic annual required care for alpacas is explained below.

Shearing

Regardless of the fleece quality, alpacas in Western Australia should be shorn once a year, preferably in spring before seed set and after the coldest weather has passed. This avoids newly shorn animals enduring a cold winter with no protection, or heat stress or sunburn if shorn in summer.

Toenail trimming

Alpacas have soft padded feet with two toes on each foot and a soft leathery pad. The nail on each toe should be level with the pad as overgrown nails twist and may cause lameness. Generally nails are clipped about every six months but animals grazing on soft ground will need trimming more frequently than those on hard ground.

Teeth care

Incisors that grow beyond the dental pad look unsightly and may influence eating efficiency. Small amounts of tooth may be trimmed back using a suitable file or an electric grinder (angle or rotary).

Males develop fighting teeth at about 2 years of age (around sexual maturity) and these should be trimmed back to avoid injuries being inflicted on other males. Fighting teeth should only be trimmed with obstetric wire, as repeated trimming may expose the pulp cavity and lead to infection. A demonstration from a competent person is imperative before an alpaca owner attempts it for the first time.

For further information or assistance, please contact Mr Peter Richards of Suncloud Alpacas on 0488 414 020.



Q & A - Restricted and prohibited burning & harvest bans

Q: What's the difference between "restricted" and "prohibited" burning, and what does it mean for me?

A: "Restricted burning" means that burning may only be conducted with a permit issued by the Shire Ranger or a Fire Control Officer. "Prohibited burning" means absolutely no burning off whatsoever.

Anyone burning an open fire in the front or back yard - including residential properties in town, and irrespective of whether it has rained recently - risks a \$250 fine.

Additionally, the Shire maintains a Harvest Ban SMS notification list. You can contact the Shire on 9041 1611 to get your number added to the list to receive an SMS alert whenever a Harvest Ban or Total Fire Ban is put in place.

Alternatively, you can phone our Harvest Ban hotline on 9041 2999 at any time to find out if there is a ban currently in effect. To find out if DFES have imposed a Total Fire Ban, as well as to learn what you can and can't do during a Total Fire Ban, visit the DFES website at www.dfes.wa.gov.au

Restricted Burning Period:

18 September 2017 - 31 October 2017

17 February 2018 - 16 March 2018

Prohibited Burning Period:

1 November 2017 - 16 February 2018

Cat and dog registrations

Annual cat and dog registrations are now due. All cats that have reached six months of age are legally required to be sterilised, microchipped and registered with your local government office. Similarly, all dogs that have reached 3 months of age must be microchipped and registered.

All registrations are due on 1 November each year. 1-year, 3-year and lifetime registration is available. A number of concessions and discounts are available - visit www.merredin.wa.gov.au/ranger-services.aspx or phone 9041 1611 for more information.