

# Request for Quotation

---

Request for Quotation:	Submersible Feed Pump Supply & Installation
RFQ Number:	RFQ18 - 2024 - 25
Deadline:	2:00 PM Wed 5 <sup>th</sup> Feb 2025
Quotation documents availability and lodgement.	<p>RFQ documents are available from Shire of Merredin website:  <a href="#">Tenders » Shire of Merredin</a></p> <p>All submissions must be lodged electronically through the Council tender email  <a href="mailto:tenders@merredin.wa.gov.au">tenders@merredin.wa.gov.au</a></p>
<p>Submissions Are To Be Received Via The Above Electronic Quotation Box By The Closing Time And Date.            Late Submissions Will Not Be Accepted.</p>	

## **1 Introduction**

The Shire of Merredin is seeking quotes from suitably qualified and experienced contractors to supply and install submersible feed pumps in two dams to supply two separate feed pumps and sheds.

### **1.1 Project Timing**

The quotes will be evaluated in Feb 2025 with work to be delivered by April 2025 the latest.

### **1.2 Nature of Contract**

This contract is a lump sum to carry out the work in accordance with specifications, illustrations, and as described in the schedule of quantities provided in this document.

### **1.3 General Conditions of Contract**

General Conditions of Contract are as per Shire of Merredin General Conditions of Contract and are applicable herewith to this RFQ.

Unless otherwise indicated in the response received to this RFQ, it is taken that all of the Conditions of Contract outlined have been unconditionally accepted by the respondent.

### **1.4 Contact Persons**

Respondents should not rely on any information provided by any person other than the person listed below:

Name:	Lawrie Carr
Position	Asset Management Officer
Telephone:	0429 683 645
Email:	<a href="mailto:amo@merredin.wa.gov.au">amo@merredin.wa.gov.au</a>

## 2 Scope of Works

The proposed scope of work is broken into two parts.

### **Dam 1** – Treated Water Storage Dam

- Supply and install submersible feed pump.
  - o Appropriate for treated waste water
  - o >3kW three phase motor
- Cable Extension – 120m
- Supply and install a pontoon
- Stay Wires
- Control Panel – 3kW soft start motor

This pump will feed the two pumps located in the pump shed.

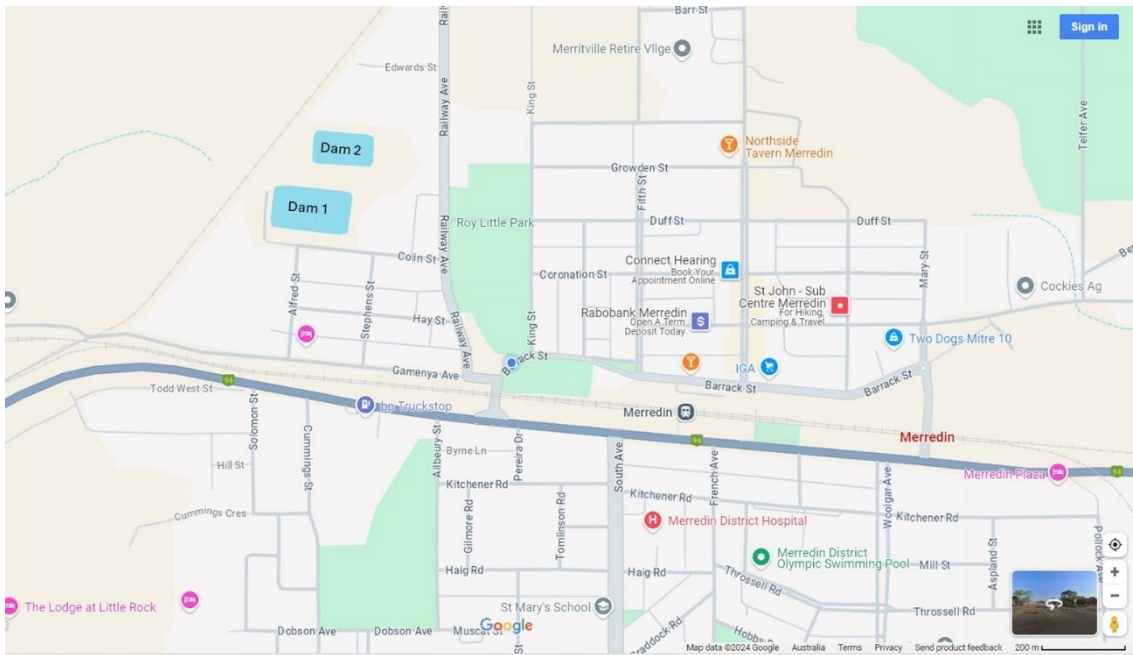
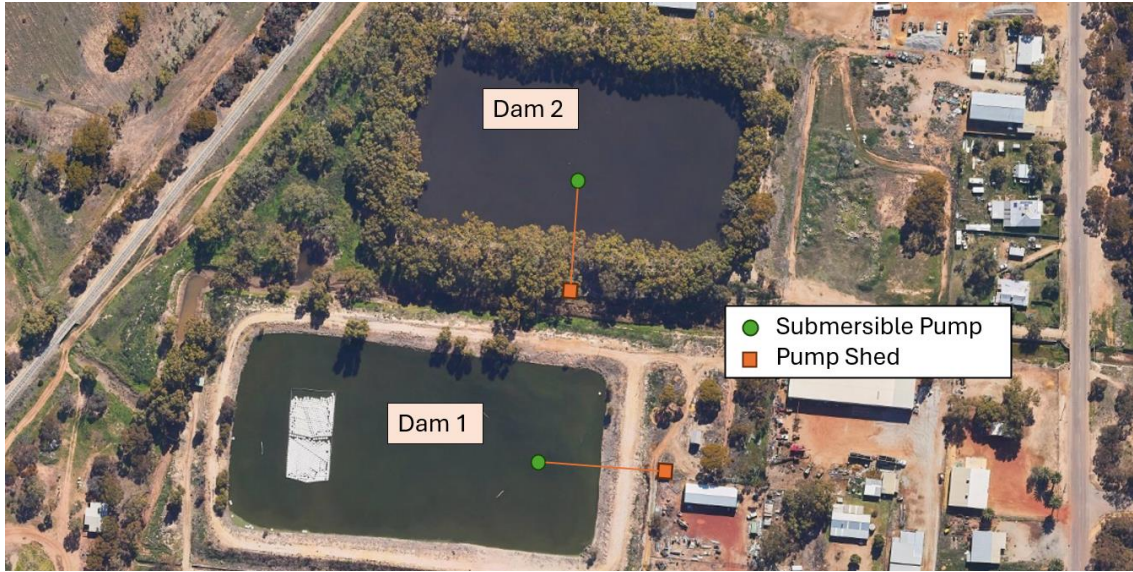
### **Dam 2** – Storm Water Storage Dam

- Supply and install submersible feed pump to replace existing transfer pump.
  - o Appropriate for storm water
  - o >2.2kW three phase motor
- Cable Extension – 100m
- Utilise existing VSD
- Supply and install a pontoon
- Stay Wires

This pump will replace the existing transfer pump and feed the irrigation network.

## 2.1 Project Location

The site location is in Merredin WA 6415, The proposed location shown below:



## 2.2 Price Schedule

Respondents must complete the following “Price Schedule”. Before completing the Price Schedule, Respondents should ensure they have read this entire Request for Quotation. Prices are to exclude GST unless otherwise requested.

The below quantities are estimates only, and as such, the Principal reserves the right to increase or reduce quantities at its discretion.

Item	Description	Quantity	Rates	Amount
1.0	<b>Site Establishment</b> mob and demo including all accommodation, food and messing	1		
2.0	<b>Dam 1 – Wastewater Storage Dam,</b> Provide all I material and labour for Supply One submersible pump (>3kW 3Ph) 120 m Cable Extension One Pontoon One Stay Wires One Control Panel - >3kW Soft Start Motor	1		
3.0	<b>Dam 2 – Storm Water Storage Dam</b> Provide all I material and labour for supply and install one submersible pump (>2.2kW 3Ph) supply and install 100 m Cable extension supply and install one Pontoon supply and install one Stay Wires	1		
<b>Subtotal Works Schedule (Excluding GST)</b>				
<b>GST (10.0%)</b>				
<b>Project Total (Including GST)</b>				

<b>Company Name</b>			
<b>Company Address</b>			
<b>Company Phone</b>			
<b>Name</b>		<b>Mobile</b>	
<b>Email</b>			
<b>Signed on Behalf of Company</b>		<b>Date</b>	